

BENCH MARK: RIALTO AVENUE  
 AND SIERRA WAY  
 S.M. 1082.18

NOTE: SEE SHEET NO. 1 FOR GENERAL NOTES.  
 FIELDWORK AGENCY OF  
 CITY OF SAN BERNARDINO  
 DEPARTMENT OF ENGINEERING  
 CITY OF SAN BERNARDINO

MEADOWBROOK  
 PROJECT AREA NO. 1  
 CALIF R-10  
 RIALTO AVENUE (CONT.) FROM STA. 22+50  
 TO SIERRA WAY  
 BOYD STREET-RIALTO AVE. TO 166.25 SOUTHERLY

NO.	DATE	BY	REVISIONS
1	8-23-63	J.P. HAYES	UPON THE PLANS SUBMITTED FOR STODDARD A.D.C.H. NO. 1082

ACCEPTED BY: [Signature]  
 STAFF ENGINEER  
 REGISTERED CIVIL ENGINEER NO. 3522

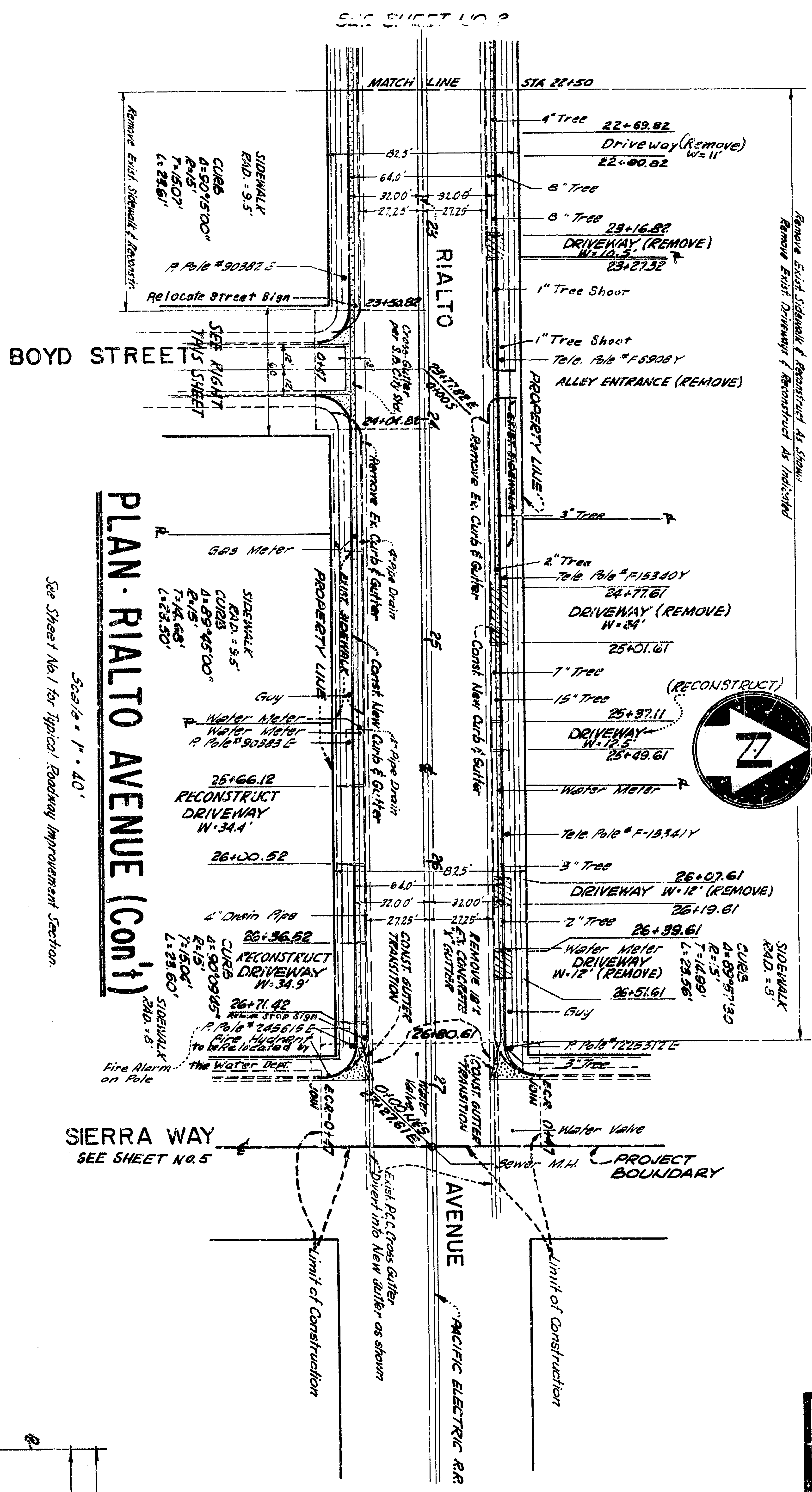
APPROVED BY: [Signature]  
 REGISTERED CIVIL ENGINEER NO. 3522

DRAWN BY: J.E.K.  
 CHECKED BY: J.E.K.

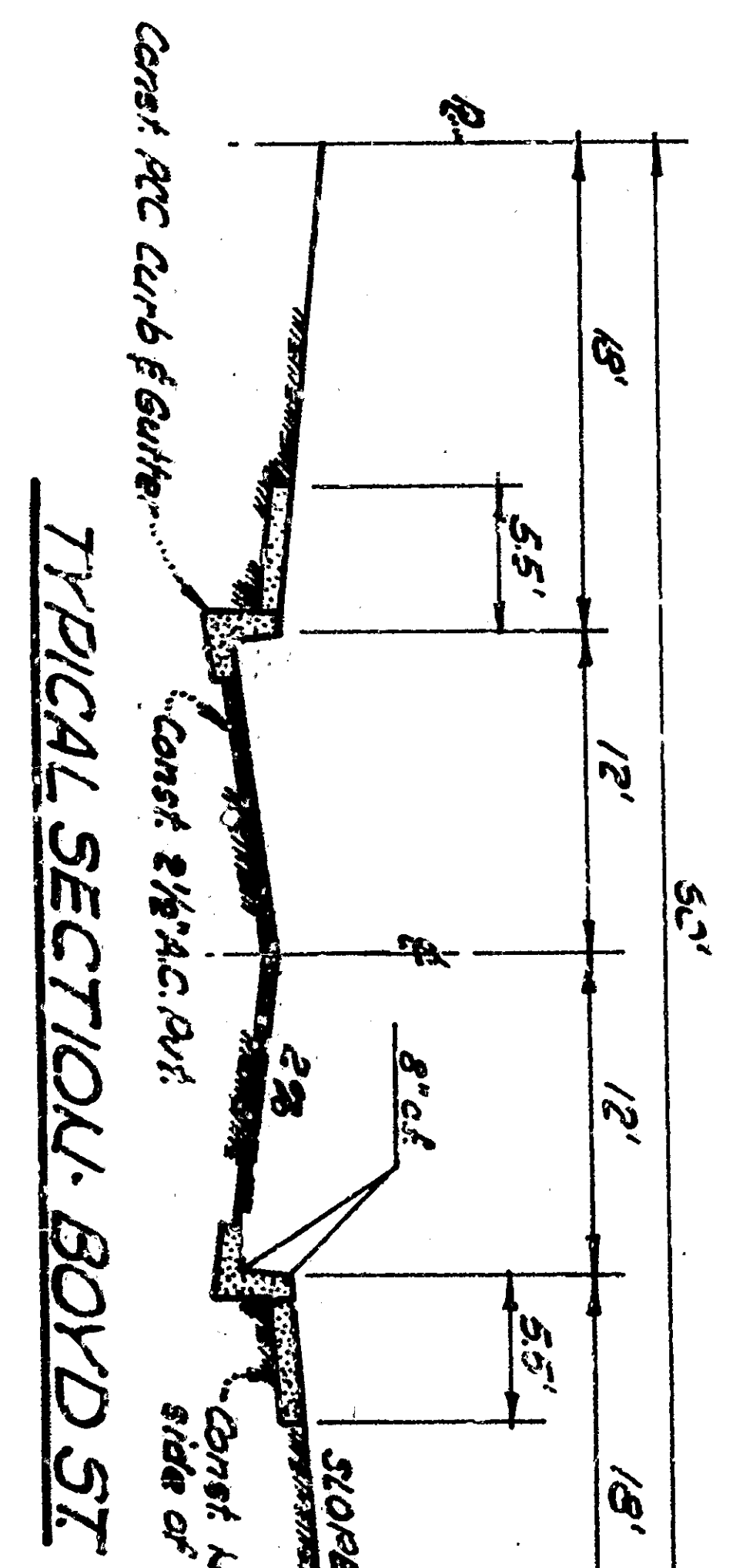
DATE: 8/23/63

2875

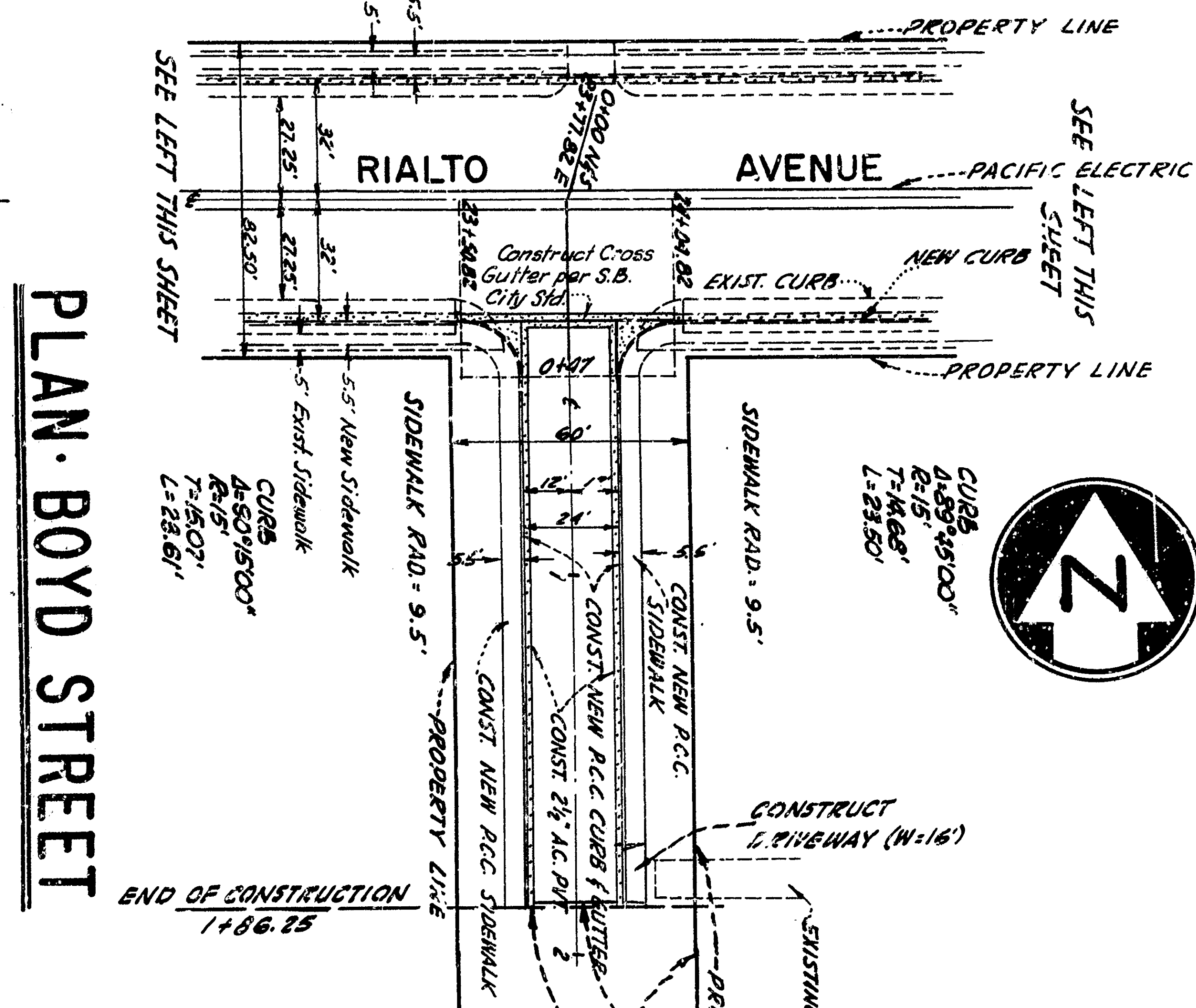




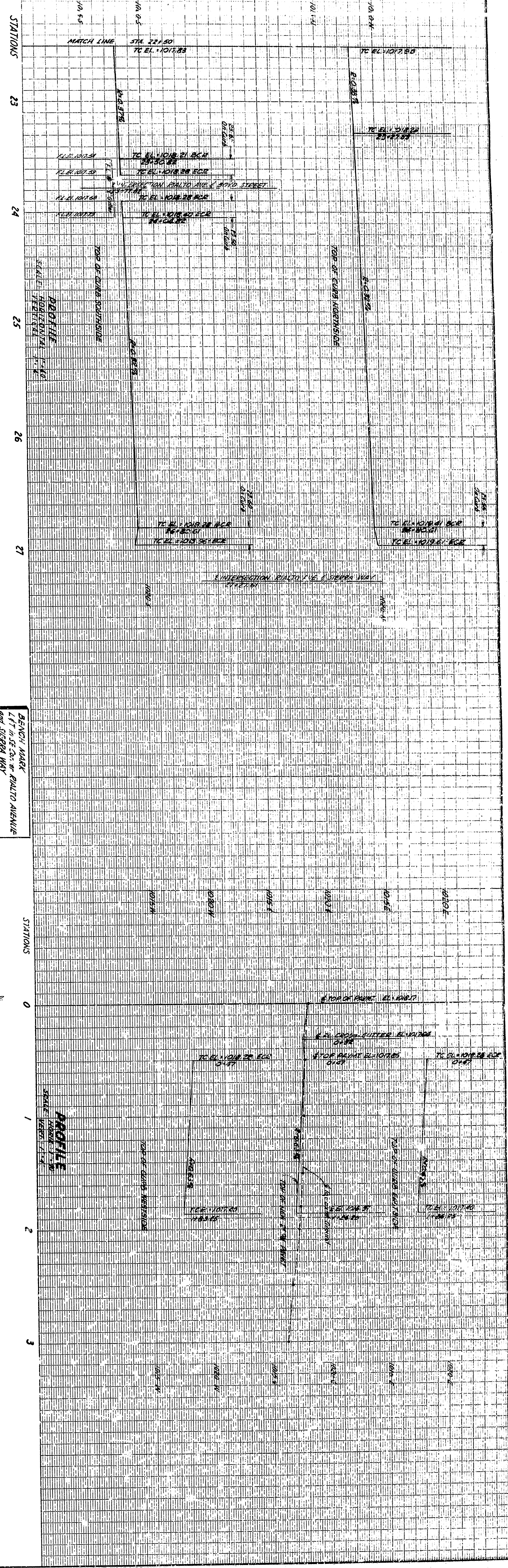
**PLAN - RIALTO AVENUE (CONT)**  
Scale: 1" = 40'



**TYPICAL SECTION - BOYD ST**



**PLAN - BOYD STREET**  
Scale: 1" = 40'



**PROFILE**  
Scale: 1" = 10'

NO.	DATE	BY	REVISIONS
1	8-23-63	J.P. HAYES	UPON THE PLANS SUBMITTED BY THE CITY OF SAN BERNARDINO FOR THE RIALTO AVENUE IMPROVEMENT PROJECT AREA NO. 1

NOTE: SEE SHEET NO. 1 FOR GENERAL NOTES.  
 MEADOWBROOK PROJECT AREA NO. 1  
 RIALTO AVENUE (CONT) FROM STA. 22+50 TO STA. 27+00  
 BOYD STREET - RIALTO AVE. TO 166+25 SOUTHERLY

DEPARTMENT OF ENGINEERING  
 CITY OF SAN BERNARDINO  
 REGISTERED CIVIL ENGINEER NO. 2221  
 REGISTERED CIVIL ENGINEER NO. 3322  
 REGISTERED CIVIL ENGINEER NO. 1951  
 REGISTERED CIVIL ENGINEER NO. 1951  
 REGISTERED CIVIL ENGINEER NO. 1951  
 REGISTERED CIVIL ENGINEER NO. 1951

APPROVED BY: [Signature]  
 REGISTERED CIVIL ENGINEER NO. 2221  
 REGISTERED CIVIL ENGINEER NO. 3322  
 REGISTERED CIVIL ENGINEER NO. 1951  
 REGISTERED CIVIL ENGINEER NO. 1951  
 REGISTERED CIVIL ENGINEER NO. 1951

DRAWN BY: J.E.H.  
 CHECKED BY: J.E.H.  
 2875